

# JIG - Fast Facts

- The Joint Inspection Group (JIG) was originally formed in the 1970s to coordinate inspections at Joint Venture (JV) locations
- JIG developed standards (guidelines) as the basis for inspections of JVs in 1974
- IATA has endorsed JIG Standards since Issue 8 (January 2001) and is represented on the Working Group that develops new JIG Standards
- Membership has increased rapidly in recent years and now stands at 99 members from all around the world, involved in over 2000 airport fuel operations
- IATA is a JIG Member, and JIG is an IATA Strategic Partner.

Approximately 40% of jet fuel in the world is supplied through more than 2000 JIG Member facilities that follow JIG Standards

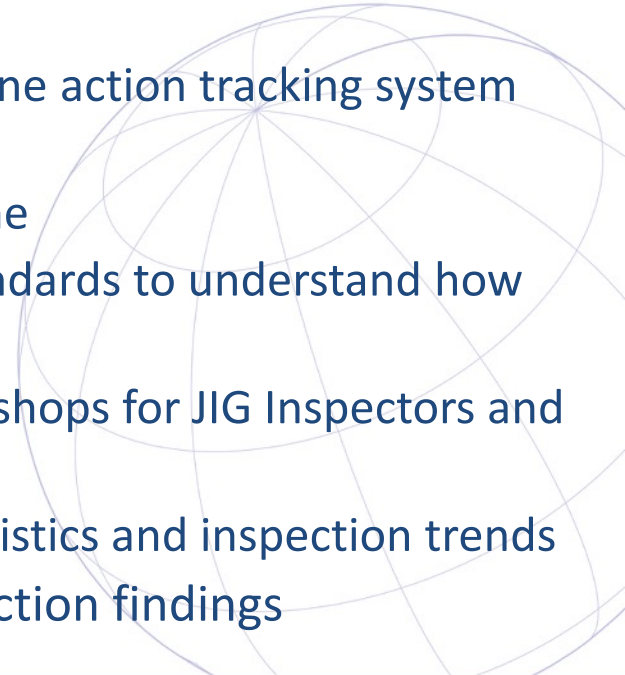
# What is JIG?

- JIG Limited was established in 2002 as a 'not for profit' organisation
- JIG has a full-time General Manager and a full-time Technical Manager who coordinate and drive JIG initiatives, supported by 2 part-time Administration & Event Coordinators
- Many JIG member companies currently contribute their time, expertise and resources free of charge, through the JIG Committees
- JIG provides guidance to JIG members on operating standards, and the management of risks associated with aviation fuel storage, hydrant and into-plane operations
- JIG has no power of enforcement. Enforcement is achieved through the power of the individual operations

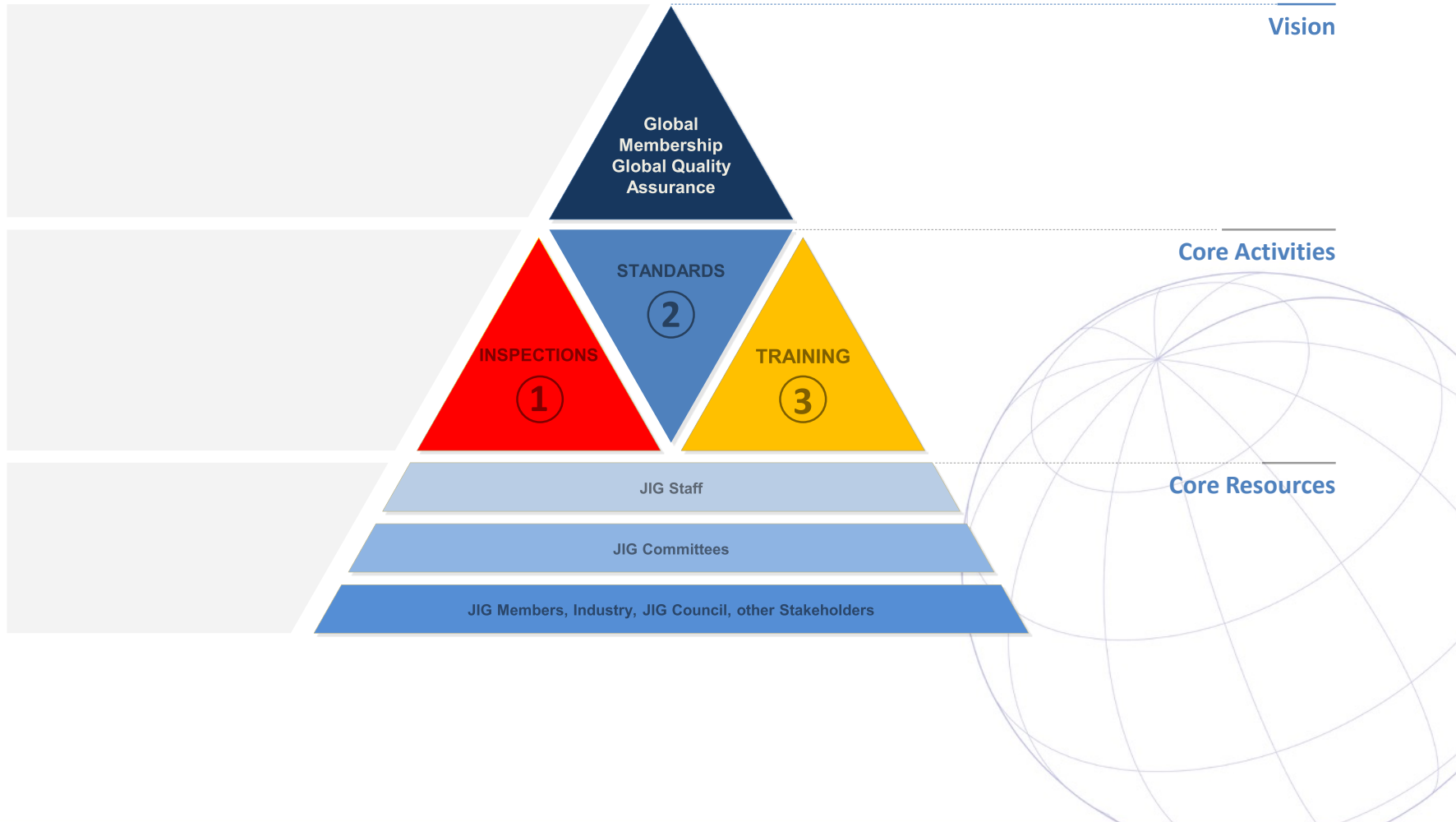


# What does JIG do?

- Maintains and regularly updates the JIG Standards based on input from specialists within the major fuel suppliers, airport storage organisations, into-plane businesses, other JIG members and IATA
- Develops and issues JIG Bulletins to address emerging issues and /or best practices e.g. FAME, EI 1584 compliance etc
- Coordinates a systematic inspection programme carried out by highly trained and experienced Inspectors
- Tracks inspection findings to close out through the on-line action tracking system (JITS) to review compliance
- Oversees the Inspected to JIG Standards (IJS) Programme
- Evaluates deviations from standards by users of JIG Standards to understand how risks are managed
- Provides Training to Inspect to JIG Standards, and Workshops for JIG Inspectors and Managers of locations operating to JIG Standards
- Distributes lessons learned from incidents, incident statistics and inspection trends
- Analyses and shares the analysis and trends of inspection findings



# Joint Inspections Group





# JIG Membership & Policies



- To join JIG, an organisation has to meet a strict criteria and complete an application form, through contacting [andrea.wixey@jigonline.com](mailto:andrea.wixey@jigonline.com)
- Once received all applicants will be subject to a sanctions check to establish any sanctions on the prospective organisation (UN,US, EU and UK Sanctions)
- The JIG Council will agree membership after review of all requested information, and grant membership at its discretion
- JIG have active policies to cover anti-trust, anti-bribery and corruption, data protection, and intellectual property as well as internal policies to ensure that it meets all external and internal governance. JIG Members may be subject to some or all of JIG's policies

